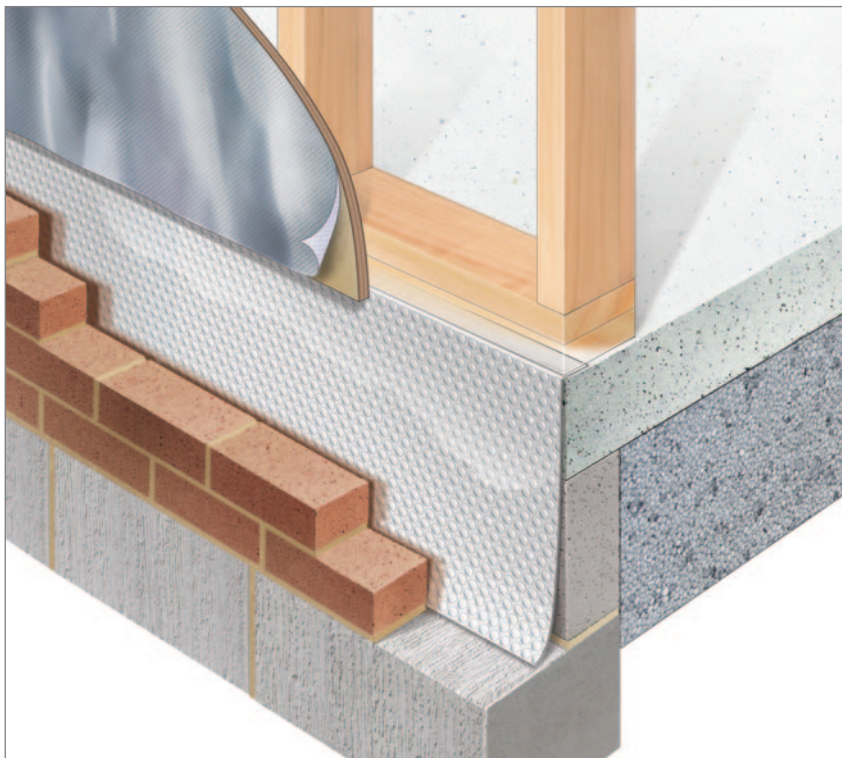


ThermaEdge

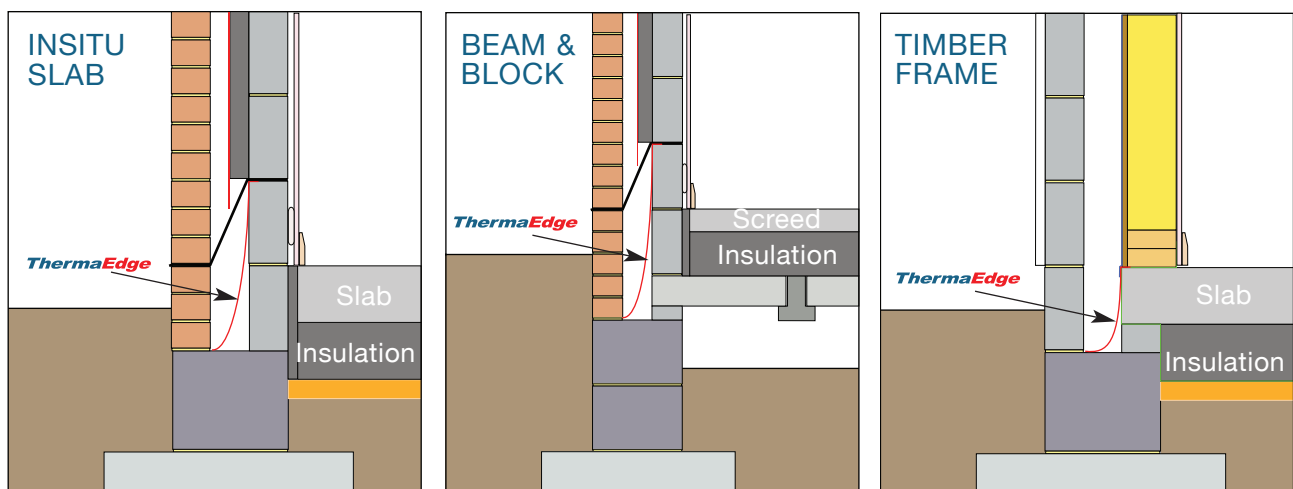
SLAB EDGE INSULATION FOR COLD BRIDGING PREVENTION



A simple and low cost solution for insulating the edges of ground floor slabs to prevent cold bridging.

- Flat top edge allows ThermaEdge to be built into the inner leaf.
- Suitable for use with masonry or framed constructions.
- Thin & flexible.
- Easy to fit.
- Water & rain resistant helping to prevent water penetration.
- Environmentally friendly:
ODP = Zero
GWP = Less than 5

STANDARD DETAILS



FOR FURTHER INFORMATION ON COLD BRIDGING OR TO DISCUSS PROJECT SPECIFIC CALCULATIONS PLEASE CONTACT THE TECHNICAL DEPARTMENT ON 01582 544255



T: 01582 450814
E: info@thermal-economics.co.uk
W: www.thermal-economics.co.uk



Visit our website for mobile friendly installation guides



©Thermal Economics Ltd. Issue 3 August 2019

For help choosing the right product for your project please contact Thermal Economics Technical Department on 01582 544255

For all our Acoustic & Thermal insulation products visit: www.thermal-economics.co.uk