



Innovators and leading suppliers of Thermal & Acoustic Insulation to the UK Construction Industry.



Insulate Innovate Newsletter

At Thermal Economics, we provide high-performance solutions for commercial and private projects that remain cost effective whilst meeting and often exceed building regulation requirements.

With in-house technical knowledge and expertise, we can well support the needs of UK distributors, builders and sub-traders.

Our quarterly newsletter keeps you informed on our latest products and news within the construction market. If you do have any further questions, please contact us on our details below.

Latest News

Keeping you updated on what has been happening at Thermal Economics over the last quarter.



Thermal Economics achieves BBA certification for its Alreflex Platinum within steel frame walls.

Thermal Economics is committed to achieving industry recognised accreditations for its technical products designed for the construction industry. It is pleased to announce that the BBA has certified its Alreflex Platinum insulation for light steel frame wall constructions. For the full press release, [click here](#).



RIBA Accredited Seminars

Thermal Economics is pleased to announce its involvement in the RIBA CPD Providers Network. Our current approved seminar is:

Understanding Acoustics: Basic Principles of Designing & Specifying Separating Floors

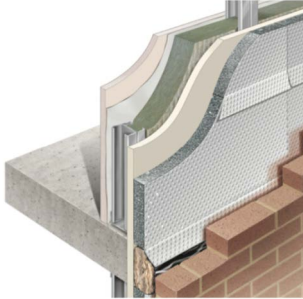
Providing general awareness on the reduction of sound transmission through separating floors in the domestic environment.

To book this seminar, please contact Bridie Pascal, General Management Assistant at Thermal Economics on 01582 544238.



FeFRA - Screeding apprentices complete final module

Ian Griffiths provided training for the Screed 1 Apprentices at FeFRA. The training covered compliance and testing, robust details and installation methods for thermal and acoustic insulation.



BLOG: Using BBA approved Alreflex Platinum with steel frames

As demands are being made to increase housing supply, one of the options considered is the increased use of light steel frame construction over traditional masonry techniques, because the advantage of steel frame is that it is quicker to build and work isn't dependent upon the weather! For the full article, [click here](#).



Andrew joins Thermal Economics as Technical Consultant

Thermal Economics welcomes Andrew to the Technical Services department. Andrew brings with him a wealth of experience and knowledge to his role as Technical Consultant . . . [click here](#) for full press release.



Thermal Economics raises awareness for CRASH

It was Christmas Jumper time in December to help raise awareness for the UK construction and property industry charity for the homeless. We believe this is a great charity. [Click here](#) to read more about their valuable work.



Recent ACOUSTIC insulation project: ISORUBBER The refurbishment of Centre Point Tower, London

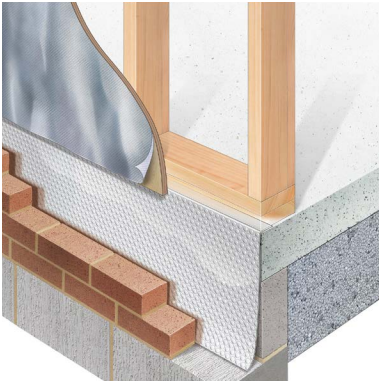
Centre Point, located at the junction of Oxford Street and Tottenham Court Road, was possibly the most iconic building of London. When it was originally built in the sixties it was considered a very prestigious office building. However, it proved impossible to rent and stayed unoccupied for a long time until eventually squatters moved in.

It has recently been completely refurbished into apartments by Brookfield Multiplex (the company that built Wembley stadium among other major projects).

For the floor sound insulation, Thermal Economics supplied over 12,000m² of Isorubber Base during a 3 month period. The Isorubber Base solution provided was tailored to the exact need of the project as its requirements were outside of the main spec and Thermal Economics believes in providing products that fit a project rather than fitting projects around a product. We're pleased to see this building back to its glory again!

Solution Showcase

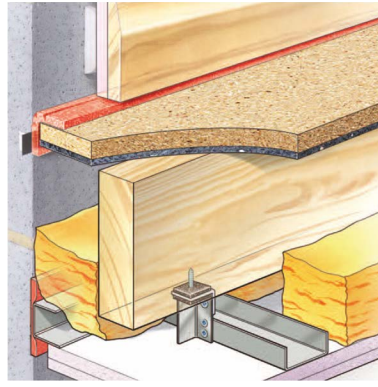
Our Technical and Sales Teams have informed us that the top 3 products that have proven to be most popular this quarter have been:



Alreflex ThermaEdge

Alreflex ThermaEdge is part of the Alreflex group of products. It is a bubble foil insulation designed to prevent cold bridging at the junction between floor slab and cavity wall.

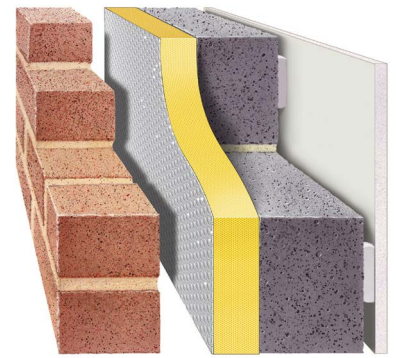
[Read more](#)



IsoSonic Dekfloor 30

This forms a combined sound insulation and structural deck, installed directly over the floor joists. It is composed of 8mm Isorubber resilient layer bonded to V313 chipboard.

[Read more](#)



Alreflex Ultratherm

Alreflex Ultratherm insulation boards combine the thermal properties of PIR with the low emissive technology and vapour resistance of Alreflex foil.

[Read more](#)

Thermal Economics is an insulation leader in thermal and acoustic solutions for the construction industry. As specialists in this field with over 35 years of success, we continually invest in R&D to provide innovative and high-performance solutions for commercial and private projects that remain cost effective as well as meet and exceed building regulation requirements.

Technical knowledge and expertise means we can well support the needs of UK distributors, builders and sub-traders. Our acoustic products include the [Isorubber](#) and [IsoVibra](#) ranges which are used in our [IsoSonic](#) solutions and [Robust Detail](#) constructions which are Part E compliant. Our thermal products include the [Alreflex](#), [Platinum](#) and [Thermaedge](#) ranges which are used to provide Part L and Section 6 compliant solutions.